



## THE NATIONAL INSTITUTE FOR WORK AND LEARNING'S COMPASS ROSE COLLABORATIVE

More than 650,000 people are released from prison each year. Studies show that approximately two-thirds will be rearrested within three years.<sup>1</sup> These facts illustrate a cycle. Young people who get involved in the justice system keep coming back, and the environments they live in plunge more young people into crime. The [Compass Rose Collaborative](#), an initiative of the Department of Labor's Reentry Programs<sup>2</sup> seeks to break that cycle.

The Collaborative, started in 2017, guides young adults ages 18-24 out of the justice system and towards successful entry into the workforce and educational systems, just as the familiar symbol on maps, the compass rose, helped sailors and pioneers find their way for generations.

The National Institute for Work and Learning (NIWL) currently partners with Our Piece of the Pie®, Inc. in Hartford, CT; the City of Los Angeles Economic and Workforce Development Department and The RightWay Foundation in Los Angeles, CA; the St. Louis Agency on Training and Employment in St. Louis, MO; CommunityWorks Inc. in Denver and Colorado Springs, CO; the City of Albany Department of Youth and Workforce Services in Albany, NY; the Mayor's Office of Employment Development and National Center on Institutions and Alternatives in Baltimore, MD; Office of Workforce Development's Youth Options Unlimited Division in Boston, MA; Greater Louisville Workforce Development Board, Inc. in Louisville, KY; and Phoenix Youth & Family Services, Inc. in Southeast AR. These local organizations receive training, technical assistance, and program management support from the U.S. Department of Labor, Employment and Training Administration and FHI 360's National Institute for Work and Learning to better assist young adults reentering their communities.

### Evaluating the corridor to success

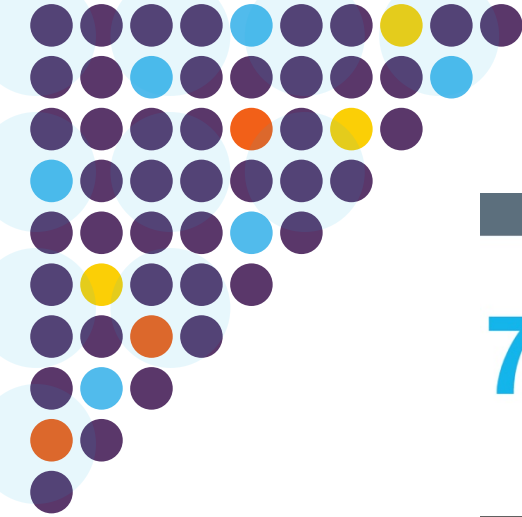
NIWL uses a standard data model across all locations to collect specific measures of success. This method ensures that the collaborative members are leading participants effectively on their voyage through the program. The Compass Rose Collaborative has demonstrated the following outcomes:

<sup>1</sup> U.S. Department of Justice [https://www.justice.gov/archive/fbci/progmenu\\_reentry.html](https://www.justice.gov/archive/fbci/progmenu_reentry.html) (Accessed September 2, 2020)

<sup>2</sup> The Compass Rose Collaborative is 100% funded by the Department of Labor in the amount of \$4.5 million. No other sources of funding support this program.

### Why a compass rose?

A compass rose is a circle showing the principal directions printed on a map or chart. Sailors have used it to find their way for generations. The Compass Rose Collaborative will guide young people out of the justice system and into productive employment or higher education, helping them reach their full potential.



**About FHI 360's National Institute for Work and Learning (NIWL)**

NIWL works at the nexus of education and employment systems, promoting their integration to ensure lifelong learning and productive work for all. NIWL seeks to build the capacity of public and private organizations, providing information, resources, and support needed to make decisions, strengthen programs, and improve outcomes for individuals.

To Get Involved or for More Information  
[NIWL@fhi360.org](mailto:NIWL@fhi360.org)

PARTICIPANT OUTCOMES	SYSTEM OUTCOMES
<p><b>70%</b> participants will be placed in an education program, apprenticeship or employment</p>	<p><b>EMPLOYER PARTNERS</b>            committed to support the local <b>young-adult</b> serving organizations within the communities of the collaborative</p>
	<p><b>NEW RESOURCES</b>            added to Department of Labor's Workforce GPS, an interactive platform for storing resources</p>
<p><b>20%</b> ↓ reduction in recidivism</p>	<p>The Communities Collaborating to Reconnect Youth network <b>will adopt the collaborative's best practices</b> and replicate them</p>
	<p>Development of an innovative Youth Development Apprenticeship curriculum and partnerships to support <b>new employment opportunities</b> for young adults</p>

**Forging new pathways through change**

The Compass Rose Collaborative has demonstrated a sustainable program model that benefits program participants, their local communities and the nation. It does this by: 1) program participants becoming self-sufficient through work or school enrollment and gaining the skills to navigate adulthood; 2) local implementation partners forging lasting community partnerships that leverage local resources to serve young people; and 3) documenting effective practices and replicating them in other communities. Through the Compass Rose Collaborative, FHI 360's National Institute for Work and Learning and its community partners are significantly improving the lifelong education and career achievements of the young people engaged in the program.

The collaborative has transformed the way that communities engage with young people involved in the justice system and developed new pathways of opportunities for young people like Anthony G., a current Compass Rose Collaborative program participant. Through the program and with paid training, Anthony was able to escape the hopelessness associated with a criminal background, unemployment and the potential homelessness. He now lives a life with financial independence and a stable job in the construction field. Anthony's perspective about his future has improved, and he is on a path to earning a promotion as a construction foreman soon.

**Join us**

We invite you to join us at FHI 360's National Institute for Work and Learning along the journey to serve and provide pathways to lifelong opportunities for all young people