

## NEBRASKA

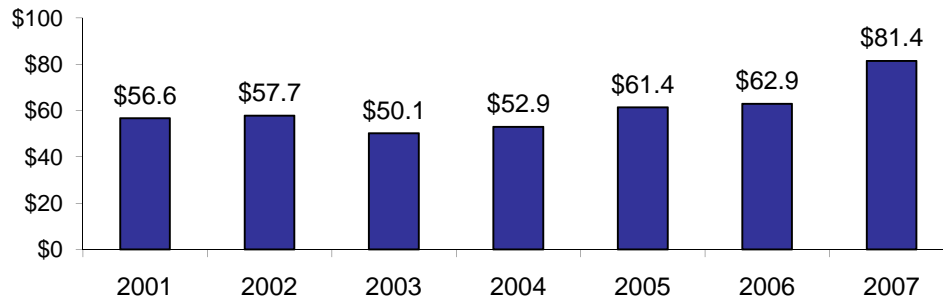
### Child Care Assistance State Profile

#### Total Combined Spending from the Child Care and Development Block Grant (CCDBG) and Temporary Assistance for Needy Families (TANF) Block Grant Funds Federal Fiscal Years 2006-2007

	Child Care Spending 2006	Child Care Spending 2007	Dollar Change 2006-2007	Percent Change 2006-2007
<b>COMBINED CHILD CARE SPENDING (CCDBG and TANF) - TOTAL<sup>1</sup></b>	<b>\$62,902,222</b>	<b>\$81,359,682</b>	<b>\$18,457,460</b>	<b>29.3%</b>
<b>Child Care and Development Block Grant Subtotal</b>	<b>\$62,902,222</b>	<b>\$81,359,682</b>	<b>\$18,457,460</b>	<b>29.3%</b>
Discretionary	\$23,345,828	\$31,451,652	\$8,105,824	34.7%
Mandatory	\$10,673,352	\$10,281,311	(\$392,041)	-3.7%
Federal Match	\$9,916,802	\$9,862,143	(\$54,659)	-0.6%
State Match	\$6,699,823	\$7,162,098	\$462,275	6.9%
State Maintenance of Effort (MOE)	\$12,266,417	\$22,602,478	\$10,336,061	84.3%
<b>Temporary Assistance for Needy Families Subtotal</b>	<b>\$0</b>	<b>\$0</b>	<b>\$0</b>	<b>N/A</b>
TANF Spent on Child Care	\$0	\$0	\$0	N/A
State TANF MOE Spent on Child Care (in excess of CCDBG MOE) <sup>2</sup>	\$0	\$0	\$0	N/A
<i>TANF Transferred to CCDBG<sup>3</sup></i>	<i>\$9,000,000</i>	<i>\$17,000,000</i>	<i>\$8,000,000</i>	<i>88.9%</i>
<i>State TANF MOE Spent on Child Care<sup>4</sup></i>	<i>\$6,498,999</i>	<i>\$6,498,996</i>	<i>(\$3)</i>	<i>0.0%</i>

#### Child Care Spending in Federal Fiscal Years 2001-2007

**Nebraska Child Care Spending, FY 2001-2007**  
(in millions of dollars)



CLASP calculations are based on:

U.S. Department of Health and Human Services, Administration for Children and Families, *CCDF Expenditure Data* (Spending from All Appropriation Years), <http://www.acf.hhs.gov/programs/ccb/data/> and *TANF Financial Data*, <http://www.acf.hhs.gov/programs/ofs/data/> (Tables A, B, and C).

See also CLASP analysis of national child care spending, *Child Care Assistance in 2007*, <http://www.clasp.org/publications/childcareassistance2007.pdf>. For a set of worksheets on FY 2007 TANF and MOE spending by states, see [http://www.clasp.org/publications/state\\_moe\\_fy07.htm](http://www.clasp.org/publications/state_moe_fy07.htm).

<sup>1</sup>To calculate total child care spending in a federal fiscal year, we sum state and federal CCDBG funds (including liquidated TANF transfers to CCDBG and CCDBG funds appropriated in prior years but liquidated in the given year); TANF funds spent directly on child care; and additional state TANF MOE. For further explanation of these categories, see [http://www.clasp.org/publications/ccspending\\_notes.pdf](http://www.clasp.org/publications/ccspending_notes.pdf). Analysis of state fiscal year expenditures may differ.

<sup>2</sup>State TANF MOE spent on child care included in the sum of total child care spending excludes funds that may have been counted towards CCDBG MOE.

<sup>3</sup>This is the total amount transferred to CCDBG in 2006 or 2007 regardless of whether it was liquidated in that year. TANF transfers that were liquidated in 2006 or 2007 are included above as CCDBG discretionary spending.

<sup>4</sup>This is the total amount of state TANF MOE spent on child care and includes funds that may also have been counted towards CCDBG MOE. In 2006, CCDBG mandatory funding was increased by \$200 million.

For additional information, contact Hannah Matthews at [hmatthews@clasp.org](mailto:hmatthews@clasp.org).

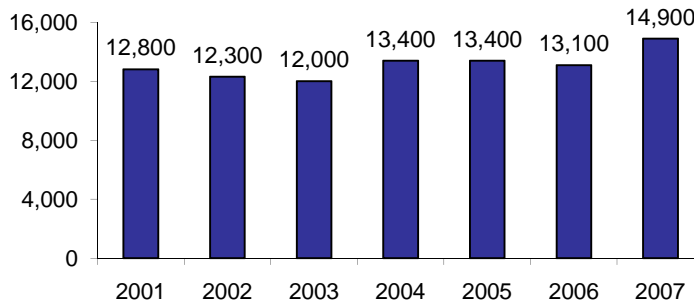
**NEBRASKA**

**Child Care Participation State Profile**

The following data are based on children who received child care assistance funded by the Child Care and Development Block Grant (CCDBG). Participation data on children who received assistance through other sources of funding, including the Temporary Assistance for Needy Families (TANF) block grant, are not available.

**CCDBG Participation in Federal Fiscal Years 2001-2007**

**Average Monthly Number of Children Served in CCDBG in Nebraska**



**A Snapshot of CCDBG Participation in Federal Fiscal Year 2007**

**Age of Children Served in CCDBG**

	NE	US
Infants and Toddlers (0-2 years)	35%	29%
Preschool Age (3-5 years)	34%	36%
School Age (6-13 years)	30%	35%

**Reasons Families Received CCDBG**

	NE	US
Employment	75%	78%
Training/Education	11%	9%
Both Employment and Training/Education	2%	5%
Protective Services	12%	4%
Other or Invalid/Not Reported	1%	3%

**Payment Types by Which Children Were Served in CCDBG**

	NE	US
Certificates, Vouchers	100%	85%
Grants and/or Contracts	0%	12%
Cash	0%	3%

**Settings in Which Children Were Served in CCDBG**

	NE	US
Center	54%	58%
Child's Home	0%	6%
Family Home	38%	28%
Group Home	8%	5%
Invalid/Not Reported	0%	1%

**Number of CCDBG Providers by Setting**

	NE	US
Center	648	87,891
Child's Home	309	136,784
Family Home	3,235	414,865
Group Home	284	25,989

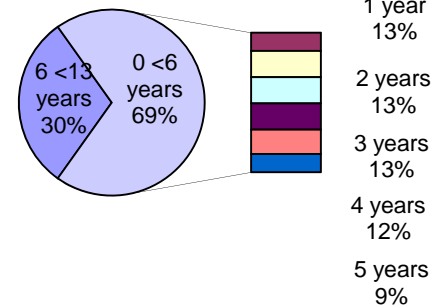
**Percent of CCDBG Families Receiving TANF Assistance**

	NE	US
	24%	17%

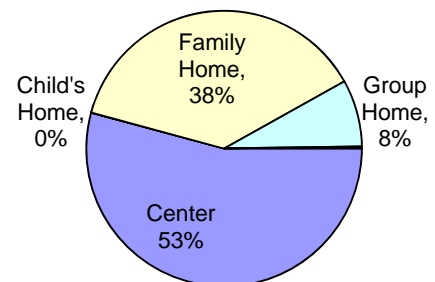
**Percent of CCDBG Families with a Co-payment for Care**

	NE	US
	15%	64%
Average Copayment of These Families As a Percent of Monthly Income	9%	6%

**Ages of Children Served in CCDBG, Nebraska**



**Settings in Which Children Were Served in CCDBG, Nebraska**



Source: U.S. Department of Health and Human Services, Child Care Bureau, *FFY 2007 CCDF Data Tables (Preliminary Estimates)*, [http://www.acf.hhs.gov/programs/ccb/data/ccdf\\_data/07acf800\\_preliminary/list.htm](http://www.acf.hhs.gov/programs/ccb/data/ccdf_data/07acf800_preliminary/list.htm)

For CLASP's analysis of national CCDBG participation data, see *Child Care and Development Block Grant Participation in 2007* at [http://www.clasp.org/publications/ccdbgp participation\\_2007.pdf](http://www.clasp.org/publications/ccdbgp participation_2007.pdf).