

## OHIO

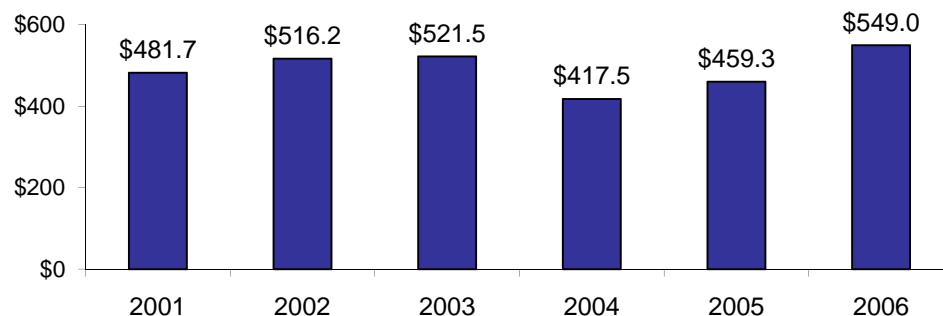
### Child Care Assistance State Profile

#### Total Combined Spending from the Child Care and Development Block Grant (CCDBG) and Temporary Assistance for Needy Families (TANF) Block Grant Funds Federal Fiscal Years 2005-2006

	Child Care Spending 2005	Child Care Spending 2006	Dollar Change 2005-2006	Percent Change 2005-2006
<b>COMBINED CHILD CARE SPENDING (CCDBG and TANF) - TOTAL<sup>1</sup></b>	<b>\$459,271,095</b>	<b>\$549,028,200</b>	<b>\$89,757,105</b>	<b>19.5%</b>
<b>Child Care and Development Block Grant Subtotal</b>	<b>\$290,707,141</b>	<b>\$297,015,609</b>	<b>\$6,308,468</b>	<b>2.2%</b>
Discretionary	\$70,822,207	\$71,492,561	\$670,354	0.9%
Mandatory	\$70,124,656	\$70,124,656	\$0	0.0%
Federal Match	\$58,257,424	\$63,318,852	\$5,061,428	8.7%
State Match	\$39,358,903	\$42,426,489	\$3,067,586	7.8%
State Maintenance of Effort (MOE)	\$52,143,951	\$49,653,051	(\$2,490,900)	-4.8%
<b>Temporary Assistance for Needy Families Subtotal</b>	<b>\$168,563,954</b>	<b>\$252,012,591</b>	<b>\$83,448,637</b>	<b>49.5%</b>
TANF Spent on Child Care	\$117,811,934	\$146,456,696	\$28,644,762	24.3%
State TANF MOE Spent on Child Care (in excess of CCDBG MOE) <sup>2</sup>	\$50,752,020	\$105,555,895	\$54,803,875	108.0%
<i>TANF Transferred to CCDBG<sup>3</sup></i>	<i>\$0</i>	<i>\$0</i>	<i>\$0</i>	<i>N/A</i>
<i>State TANF MOE Spent on Child Care<sup>4</sup></i>	<i>\$102,934,376</i>	<i>\$155,208,946</i>	<i>\$52,274,570</i>	<i>50.8%</i>

#### Total Child Care Spending in Federal Fiscal Years 2001-2006

**Ohio Child Care Spending, FY 2001-2006**  
(in millions of dollars)



CLASP calculations are based on:

U.S. Department of Health and Human Services, Administration for Children and Families, *CCDF Expenditure Data* (Spending from All Appropriation Years), <http://www.acf.hhs.gov/programs/ccb/data/> and *TANF Financial Data*, <http://www.acf.hhs.gov/programs/ofs/data/> (Tables A, B, and C).

See also CLASP analysis of national child care spending, *Child Care Assistance in 2006*, <http://www.clasp.org/publications/childcareassistance2006.pdf>.

For a set of worksheets on FY 2006 TANF and MOE spending by states, see [http://www.clasp.org/publications/state\\_moe\\_fy06.htm](http://www.clasp.org/publications/state_moe_fy06.htm).

<sup>1</sup>To calculate total child care spending in a federal fiscal year, we sum state and federal CCDBG funds (including liquidated TANF transfers to CCDBG and CCDBG funds appropriated in prior years but liquidated in the given year); TANF funds spent directly on child care; and additional state TANF MOE. For further explanation of these categories, see [http://www.clasp.org/publications/ccspending\\_notes.pdf](http://www.clasp.org/publications/ccspending_notes.pdf). Analysis of state fiscal year expenditures may differ.

<sup>2</sup>State TANF MOE spent on child care included in the sum of total child care spending excludes funds that may have been counted towards CCDBG MOE.

<sup>3</sup>This is the total amount transferred to CCDBG in 2005 or 2006 regardless of whether it was liquidated in that year. TANF transfers that were liquidated in 2005 or 2006 are included above as CCDBG discretionary spending.

<sup>4</sup>This is the total amount of state TANF MOE spent on child care and includes funds that may also have been counted towards CCDBG MOE.

In 2006, CCDBG mandatory funding was increased by \$200 million. States were required to obligate, or legally commit, their share of these funds in 2006 but have until 2007 to spend them.

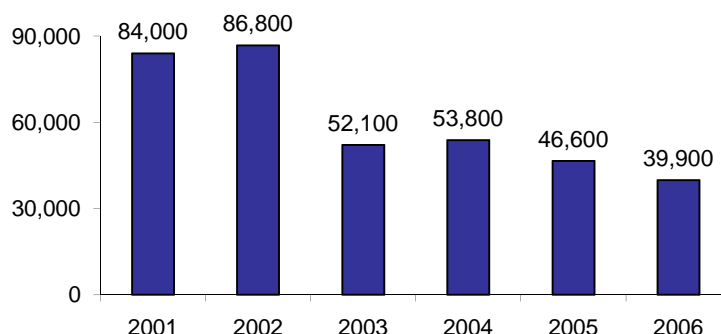
For additional information, contact Hannah Matthews at [hmatthews@clasp.org](mailto:hmatthews@clasp.org).

## OHIO

The following data are based on children who received child care assistance funded by the Child Care and Development Block Grant (CCDBG). Participation data on children who received assistance through other sources of funding, including the Temporary Assistance for Needy Families (TANF) block grant, are not available.

### CCDBG Participation in Federal Fiscal Years 2001-2006

**Average Monthly Number of Children Served in CCDBG in Ohio**

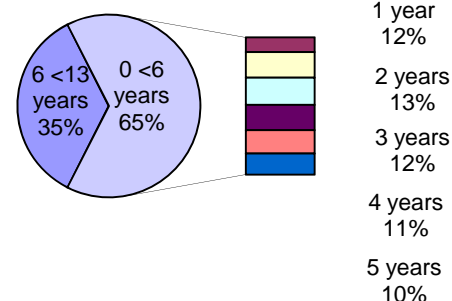


### A Snapshot of CCDBG Participation in Federal Fiscal Year 2006

#### Age of Children Served in CCDBG

	OH	US
Infants and Toddlers (0-2 years)	32%	28%
Preschool Age (3-5 years)	33%	36%
School Age (6-13 years)	35%	36%

#### Ages of Children Served in CCDBG, Ohio



#### Reasons Families Received CCDBG

	OH	US
Employment	69%	79%
Training/Education	16%	10%
Both Employment and Training/Education	5%	4%
Protective Services	0%	4%
Other or Invalid/Not Reported	10%	3%

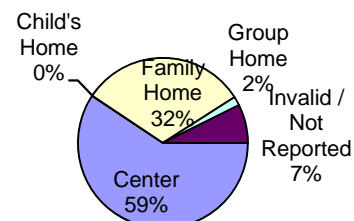
#### Payment Types by Which Children Were Served in CCDBG

	OH	US
Certificates, Vouchers	100%	85%
Grants and/or Contracts	0%	11%
Cash	0%	4%

#### Settings in Which Children Were Served in CCDBG

	OH	US
Center	59%	57%
Child's Home	0%	7%
Family Home	32%	29%
Group Home	2%	5%
Invalid/Not Reported	7%	2%

#### Settings in Which Children Were Served in CCDBG, Ohio



#### Number of CCDBG Providers by Setting

	OH	US
Center	3,747	88,297
Child's Home	14	157,697
Family Home	10,955	427,915
Group Home	210	26,689

#### Percent of CCDBG Families Receiving TANF Assistance

OH	16%
US	18%

#### Percent of CCDBG Families with a Co-payment for Care

	OH	US
Average Copayment of These Families As a Percent of Monthly Income	6%	6%

Source: U.S. Department of Health and Human Services, Child Care Bureau, *FFY 2006 CCDF Data Tables (Final)*, [http://www.acf.hhs.gov/programs/ccb/data/ccdf\\_data/06acf800/list.htm](http://www.acf.hhs.gov/programs/ccb/data/ccdf_data/06acf800/list.htm)

For CLASP's analysis of national CCDBG participation data, see *Child Care and Development Block Grant Participation in 2006* at [http://www.clasp.org/publications/ccdbgp participation\\_2006.pdf](http://www.clasp.org/publications/ccdbgp participation_2006.pdf).