

## MISSISSIPPI

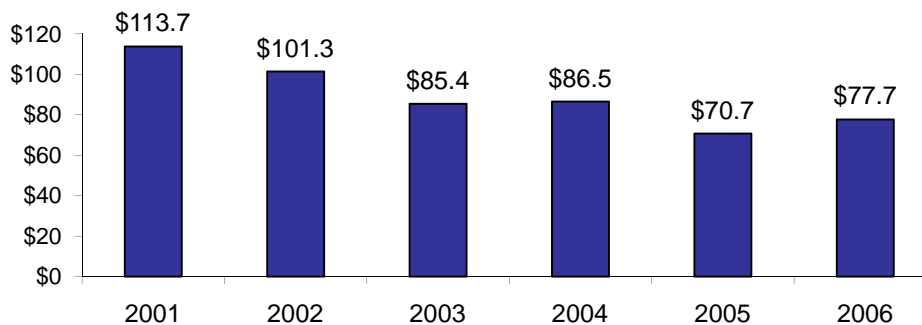
### Child Care Assistance State Profile

#### Total Combined Spending from the Child Care and Development Block Grant (CCDBG) and Temporary Assistance for Needy Families (TANF) Block Grant Funds Federal Fiscal Years 2005-2006

	Child Care Spending 2005	Child Care Spending 2006	Dollar Change 2005-2006	Percent Change 2005-2006
<b>COMBINED CHILD CARE SPENDING (CCDBG and TANF) - TOTAL<sup>1</sup></b>	<b>\$70,709,173</b>	<b>\$77,669,663</b>	<b>\$6,960,490</b>	<b>9.8%</b>
<b>Child Care and Development Block Grant Subtotal</b>	<b>\$67,497,532</b>	<b>\$80,783,551</b>	<b>\$13,286,019</b>	<b>19.7%</b>
Discretionary	\$39,245,505	\$52,345,123	\$13,099,618	33.4%
Mandatory	\$8,279,291	\$6,293,116	(\$1,986,175)	-24.0%
Federal Match	\$14,072,732	\$15,578,044	\$1,505,312	10.7%
State Match	\$4,184,574	\$4,851,838	\$667,264	15.9%
State Maintenance of Effort (MOE)	\$1,715,430	\$1,715,430	\$0	0.0%
<b>Temporary Assistance for Needy Families Subtotal</b>	<b>\$3,211,641</b>	<b>(\$3,113,888)</b>	<b>(\$6,325,529)</b>	<b>-197.0%</b>
TANF Spent on Child Care	\$1,791,641	(\$3,113,888)	(\$4,905,529)	-273.8%
State TANF MOE Spent on Child Care (in excess of CCDBG MOE) <sup>2</sup>	\$1,420,000	\$0	(\$1,420,000)	-100.0%
<i>TANF Transferred to CCDBG<sup>3</sup></i>	<i>\$19,524,027</i>	<i>\$19,160,650</i>	<i>(\$363,377)</i>	<i>-1.9%</i>
<i>State TANF MOE Spent on Child Care<sup>4</sup></i>	<i>\$3,135,430</i>	<i>\$1,715,430</i>	<i>(\$1,420,000)</i>	<i>-45.3%</i>

#### Total Child Care Spending in Federal Fiscal Years 2001-2006

**Mississippi Child Care Spending, FY 2001-2006**  
(in millions of dollars)



CLASP calculations are based on:

U.S. Department of Health and Human Services, Administration for Children and Families, *CCDF Expenditure Data* (Spending from All Appropriation Years), <http://www.acf.hhs.gov/programs/ccb/data/> and *TANF Financial Data*, <http://www.acf.hhs.gov/programs/ofs/data/> (Tables A, B, and C).

See also CLASP analysis of national child care spending, *Child Care Assistance in 2006*, <http://www.clasp.org/publications/childcareassistance2006.pdf>.

For a set of worksheets on FY 2006 TANF and MOE spending by states, see [http://www.clasp.org/publications/state\\_moe\\_fy06.htm](http://www.clasp.org/publications/state_moe_fy06.htm).

<sup>1</sup>To calculate total child care spending in a federal fiscal year, we sum state and federal CCDBG funds (including liquidated TANF transfers to CCDBG and CCDBG funds appropriated in prior years but liquidated in the given year); TANF funds spent directly on child care; and additional state TANF MOE.

For further explanation of these categories, see [http://www.clasp.org/publications/ccspending\\_notes.pdf](http://www.clasp.org/publications/ccspending_notes.pdf). Analysis of state fiscal year expenditures may differ.

<sup>2</sup>State TANF MOE spent on child care included in the sum of total child care spending excludes funds that may have been counted towards CCDBG MOE.

<sup>3</sup>This is the total amount transferred to CCDBG in 2005 or 2006 regardless of whether it was liquidated in that year. TANF transfers that were liquidated in 2005 or 2006 are included above as CCDBG discretionary spending.

<sup>4</sup>This is the total amount of state TANF MOE spent on child care and includes funds that may also have been counted towards CCDBG MOE.

In 2006, CCDBG mandatory funding was increased by \$200 million. States were required to obligate, or legally commit, their share of these funds in 2006 but have until 2007 to spend them.

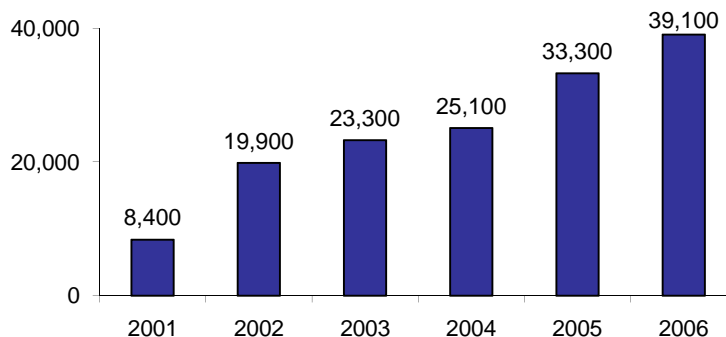
For additional information, contact Hannah Matthews at [hmatthews@clasp.org](mailto:hmatthews@clasp.org).

## MISSISSIPPI

The following data are based on children who received child care assistance funded by the Child Care and Development Block Grant (CCDBG). Participation data on children who received assistance through other sources of funding, including the Temporary Assistance for Needy Families (TANF) block grant, are not available.

### CCDBG Participation in Federal Fiscal Years 2001-2006

Average Monthly Number of Children Served in CCDBG in Mississippi



### A Snapshot of CCDBG Participation in Federal Fiscal Year 2006

#### Age of Children Served in CCDBG

	MS	US
Infants and Toddlers (0-2 years)	29%	28%
Preschool Age (3-5 years)	35%	36%
School Age (6-13 years)	35%	36%

#### Reasons Families Received CCDBG

	MS	US
Employment	68%	79%
Training/Education	7%	10%
Both Employment and Training/Education	6%	4%
Protective Services	1%	4%
Other or Invalid/Not Reported	18%	3%

#### Payment Types by Which Children Were Served in CCDBG

	MS	US
Certificates, Vouchers	97%	85%
Grants and/or Contracts	3%	11%
Cash	0%	4%

#### Settings in Which Children Were Served in CCDBG

	MS	US
Center	73%	57%
Child's Home	3%	7%
Family Home	23%	29%
Group Home	1%	5%
Invalid/Not Reported	1%	2%

#### Number of CCDBG Providers by Setting

	MS	US
Center	1,362	88,297
Child's Home	680	157,697
Family Home	5,355	427,915
Group Home	33	26,689

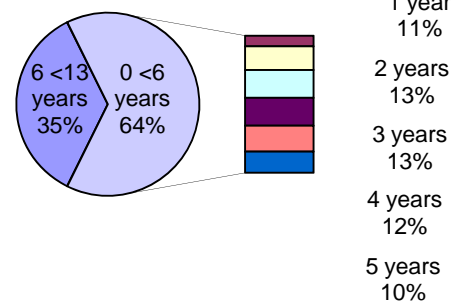
#### Percent of CCDBG Families Receiving TANF Assistance

	MS	US
	15%	18%

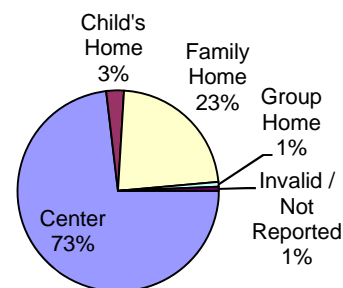
#### Percent of CCDBG Families with a Co-payment for Care

	MS	US
Average Copayment of These Families As a Percent of Monthly Income	5%	6%

#### Ages of Children Served in CCDBG, Mississippi



#### Settings in Which Children Were Served in CCDBG, Mississippi



Source: U.S. Department of Health and Human Services, Child Care Bureau, *FFY 2006 CCDF Data Tables (Final)*, [http://www.acf.hhs.gov/programs/ccb/data/ccdf\\_data/06acf800/list.htm](http://www.acf.hhs.gov/programs/ccb/data/ccdf_data/06acf800/list.htm)

For CLASP's analysis of national CCDBG participation data, see *Child Care and Development Block Grant Participation in 2006* at [http://www.clasp.org/publications/ccdbgp participation\\_2006.pdf](http://www.clasp.org/publications/ccdbgp participation_2006.pdf).